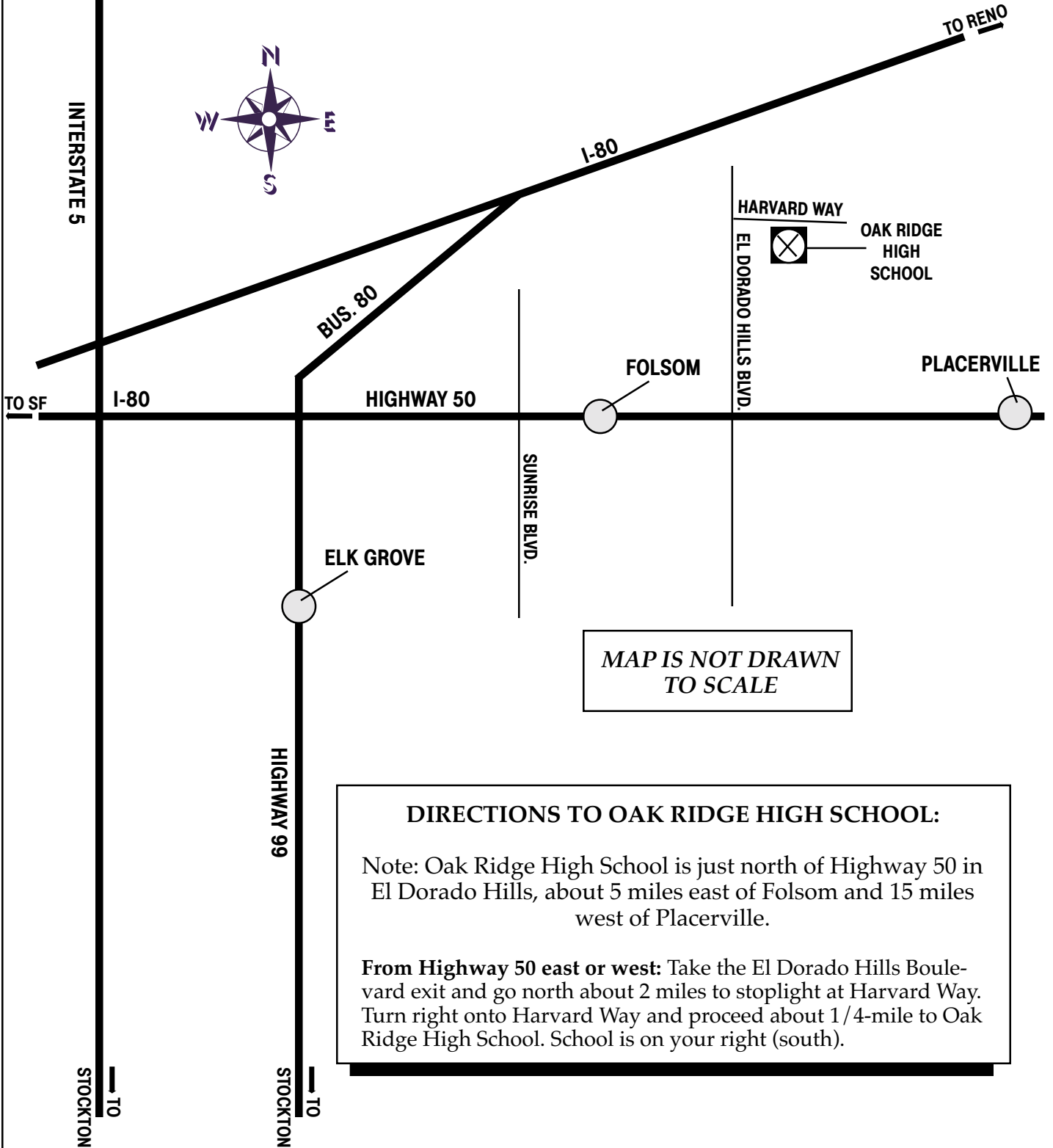


OAK RIDGE HIGH SCHOOL

1120 Harvard Way
El Dorado Hills



MAP IS NOT DRAWN
TO SCALE

DIRECTIONS TO OAK RIDGE HIGH SCHOOL:

Note: Oak Ridge High School is just north of Highway 50 in El Dorado Hills, about 5 miles east of Folsom and 15 miles west of Placerville.

From Highway 50 east or west: Take the El Dorado Hills Boulevard exit and go north about 2 miles to stoplight at Harvard Way. Turn right onto Harvard Way and proceed about 1/4-mile to Oak Ridge High School. School is on your right (south).